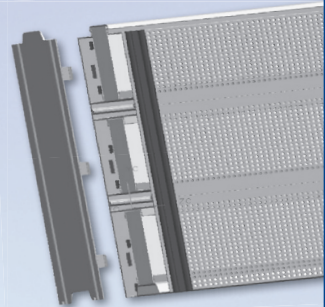


Design of noise protection elements

- ✓ One-side highly absorbent
- ✓ Two-sides highly absorbent
- ✓ Noise reflection
- ✓ Transparent
- ✓ Accessories
E.g. distance profiles, earth contact ...



Future has started.

Rail transport is becoming increasingly important. The new and unique **noise protection elements produced as an integral part** of the OTTO FUCHS clinched aluminium profile system reduce noise exposure at rail lines especially high-speed railway lines.

The noise protection elements are considerably light and can be easily and quickly installed. They offer excellent stability and durability for static and dynamic loads. Actually, they also comply with the most recent acoustic and mechanical requirements according to **EBA-Guide** and valid **German Railway Guide RIL 804.5501**.

OTTO FUCHS – We support your ideas.

